

Lever arms



• Arm

BL.366 - BL.368: acciaio cromato opaco.

BL.666 - BL.668: acciaio zincato lucido.

• Handles

- **BL.366**: I.280, phenolic based (PF) Duroplast, black colour, glossy finish. Resistant to solvents, oils, greases and other chemical agents. Fixed to the arm, not removable.

- **BL.368**: I.222, phenolic based (PF) Duroplast, black colour, glossy finish. Resistant to solvents, oils, greases and other chemical agents. Fixed to the arm, not removable.

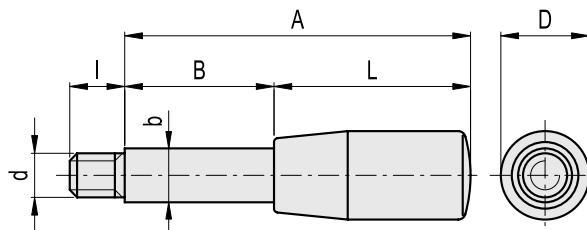
- **BL.666**: I.280, phenolic based (PF) Duroplast, black colour, glossy finish. Resistant to solvents, oils, greases and other chemical agents. Fixed to the arm, not removable.

- **BL.668**: I.622, polyamide based (PA) technopolymer, black colour, glossy finish. Resistant to solvents, oils, greases and other chemical agents. Fixed to the arm, not removable.

**Special executions on request**

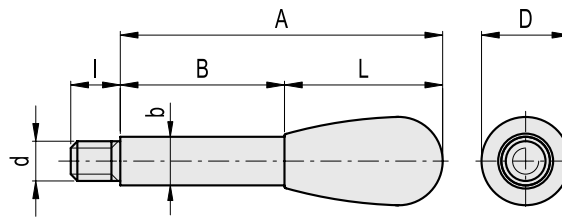
BL.668: impugnatura in diversi colori RAL.

Conversion Table	
1 mm = 0.039 inch	
D	
mm	inch
14	0.56
18	0.71
21	0.83
23	0.91
26	1.02
28	1.10

**BL.366**

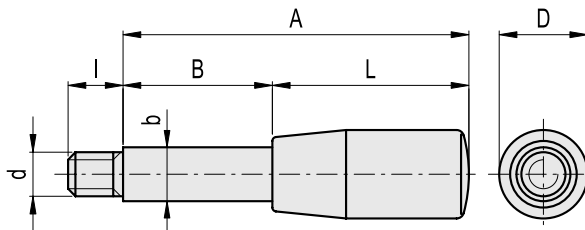
Code	Description	A	D	L	d _{6g}	B	b	I	⚖
3401	BL.366/8x65	65	14	28	M6	37	8	8	22
3402	BL.366/8x75	75	14	28	M6	47	8	8	25
3404	BL.366/8x95	95	14	28	M6	67	8	8	33
3500	BL.366/10x75	75	18	40	M8	35	10	9	40
3501	BL.366/10x65	65	18	40	M8	25	10	9	35
3502	BL.366/10x85	85	21	50	M8	35	10	9	48
3503	BL.366/10x95	95	21	50	M8	45	10	9	55
3504	BL.366/10x125	125	21	50	M8	75	10	9	73
3505	BL.366/10x155	155	21	50	M8	105	10	11	92
3601	BL.366/12x102	102	23	65	M10	37	12	14	80
3602	BL.366/12x118	118	23	65	M10	53	12	14	95
3603	BL.366/12x165	165	23	65	M10	100	12	14	138
3604	BL.366/12x203	203	23	65	M10	138	12	14	165
3701	BL.366/14x125	125	26	80	M12	45	14	15	130
3702	BL.366/14x160	160	26	80	M12	80	14	15	165
3703	BL.366/14x200	200	26	80	M12	120	14	15	220
3801	BL.366/16x105	105	28	90	M14	15	16	15	120
3802	BL.366/16x143	143	28	90	M14	53	16	15	178
3803	BL.366/16x164	164	28	90	M14	74	16	15	210
3804	BL.366/16x190	190	28	90	M14	100	16	15	252

Conversion Table	
1 mm = 0.039 inch	
D	
mm	inch
14	0.56
18	0.71
21	0.83
23	0.91
26	1.02
28	1.10



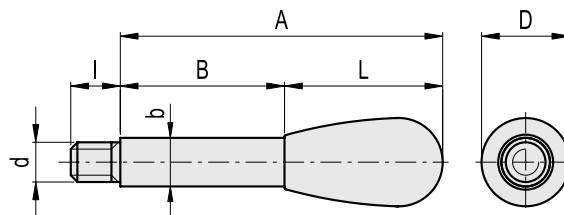
BL.368

Code	Description	A	D	L	d _{6g}	B	b	l	⚖
4001	BL.368/10x57	57	20	32	M8	25	10	9	33
4002	BL.368/10x67	67	20	32	M8	35	10	9	39
4003	BL.368/10x77	77	20	32	M8	45	10	9	45
4004	BL.368/10x107	107	20	32	M8	75	10	9	64
4005	BL.368/10x137	137	20	32	M8	105	10	11	83
4101	BL.368/12x79	79	26	42	M10	37	12	14	68
4102	BL.368/12x95	95	26	42	M10	53	12	14	82
4103	BL.368/12x142	142	26	42	M10	100	12	14	125
4104	BL.368/12x180	180	26	42	M10	138	12	14	157
4201	BL.368/14x100	100	33	55	M12	45	14	15	124
4202	BL.368/14x135	135	33	55	M12	80	14	15	160
4203	BL.368/14x175	175	33	55	M12	120	14	15	220
4301	BL.368/16x70	70	33	55	M14	15	16	15	100
4302	BL.368/16x108	108	33	55	M14	53	16	15	158
4303	BL.368/16x129	129	33	55	M14	74	16	15	190
4304	BL.368/16x155	155	33	55	M14	100	16	15	232



BL.666

Code	Description	A	D	L	d _{6g}	B	b	l	⚖
4405	BL.666/8x65	65	14	28	M6	37	8	8	22
4406	BL.666/8x75	75	14	28	M6	47	8	8	25
4407	BL.666/8x95	95	14	28	M6	67	8	8	33
4411	BL.666/10x65	65	18	40	M8	25	10	9	35
4412	BL.666/10x75	75	18	40	M8	35	10	9	40
4413	BL.666/10x85	85	21	50	M8	35	10	9	48
4414	BL.666/10x95	95	21	50	M8	45	10	9	55
4415	BL.666/10x125	125	21	50	M8	75	10	9	73
4416	BL.666/10x155	155	21	50	M8	105	10	11	92
4421	BL.666/12x102	102	23	65	M10	37	12	14	80
4422	BL.666/12x118	118	23	65	M10	53	12	14	95
4423	BL.666/12x165	165	23	65	M10	100	12	14	138
4424	BL.666/12x203	203	23	65	M10	138	12	14	165
4431	BL.666/14x125	125	26	80	M12	45	14	15	130
4432	BL.666/14x160	160	26	80	M12	80	14	15	165
4433	BL.666/14x200	200	26	80	M12	120	14	15	220
4441	BL.666/16x105	105	28	90	M14	15	16	15	120
4442	BL.666/16x143	143	28	90	M14	53	16	15	178
4443	BL.666/16x164	164	28	90	M14	74	16	15	210
4444	BL.666/16x190	190	28	90	M14	100	16	15	252



BL.668

Code	Description	A	D	L	d _{6g}	B	b	l	⚖
5011	BL.668/10x57	57	20	32	M8	25	10	9	31
5012	BL.668/10x67	67	20	32	M8	35	10	9	37
5013	BL.668/10x77	77	20	32	M8	45	10	9	43
5015	BL.668/10x107	107	20	32	M8	75	10	9	62
5016	BL.668/10x137	137	20	32	M8	105	10	11	81
5021	BL.668/12x79	79	26	42	M10	37	12	14	65
5022	BL.668/12x95	95	26	42	M10	53	12	14	79
5023	BL.668/12x142	142	26	42	M10	100	12	14	122
5024	BL.668/12x180	180	26	42	M10	138	12	14	154
5031	BL.668/14x100	100	33	55	M12	45	14	15	120
5032	BL.668/14x135	135	33	55	M12	80	14	15	156
5033	BL.668/14x175	175	33	55	M12	120	14	15	216
5041	BL.668/16x70	70	33	55	M14	15	16	15	96
5042	BL.668/16x108	108	33	55	M14	53	16	15	154
5043	BL.668/16x129	129	33	55	M14	74	16	15	186
5044	BL.668/16x155	155	33	55	M14	100	16	15	228